

Operation Manual

Pond Pump NEO Series

51000–51011



Illustration similar, may vary depending on model

Read and follow the operating instructions and safety information before using for the first time.

Technical changes reserved!

Due to further developments, illustrations, functioning steps, and technical data can differ insignificantly.

Updating the documentation

If you have suggestions for improvement or have found any irregularities, please contact us.



The information contained in this document may alter at any time without previous notice. It is prohibited to copy or spread any parts of this document in any way without prior written allowance. All rights reserved.

The WilTec Wildanger Technik GmbH cannot be held accountable for any possible mistakes in this operating manual, nor in the diagrams and figures shown.

Even though, the WilTec Wildanger Technik GmbH has undergone biggest possible efforts to ensure that the operating manual is complete, faultless, and up to date, mistakes cannot be entirely avoided.

If you should find a mistake or wish to make a suggestion for improvement, we look forward to hearing from you.

Send an e-mail to:

service@wiltec.info

or use our contact form:

<https://www.wiltec.de/contacts/>

The most recent version of this manual in various languages can be found in our online shop via:

<https://www.wiltec.de/docsearch>

Our postal address is:

WilTec Wildanger Technik GmbH
Königsbenden 12
52249 Eschweiler
Germany

Do you wish to pick goods up? Our pick-up address is:

WilTec Wildanger Technik GmbH
Königsbenden 28
52249 Eschweiler
Germany

To shorten the waiting time and allow for a rapid on-site transaction, we ask you to call us previously or placing your order via the webshop.

E-mail: service@wiltec.info

Tel: +49 2403 55592-0

Fax: +49 2403 55592-15

To return orders for exchange, repair, or other purposes, please use the following address. Attention! To allow for a smooth execution of your complaint or return, it is important to contact our customer service team before returning the goods.

Returns Department
WilTec Wildanger Technik GmbH
Königsbenden 28
52249 Eschweiler

E-mail: **service@wiltec.info**

Tel: +49 2403 55592-0

Fax: +49 2403 55592-15



Introduction

Thank you for purchasing this quality product. **To minimise the risk of injury we urge that our clients take some basic safety precautions when using this device. Please read the operation instructions carefully and make sure you have understood its content.**

Keep these operation instructions safe.

Safety guideline

Beware!

- The use of this device is only allowed in standing water bodies, garden ponds or swimming ponds and their surrounding areas with a fault current protection-switch with a triggering nominal current up to 30 mA (according to VDE 0100 Article 702 and 738).
- The device is not suitable for use in swimming pools, paddling pools and other water bodies, where people might be during operation. Operating the device while people are within the danger zone is not allowed. Ask your electrician!
- The device is not intended for use by people (including children) with impaired or limited physical, sensory and mental abilities or lack of experience and/or knowledge, unless they are supervised by a person responsible for their safety or follow the instructions stated by this person on how to use the device correctly.
- Children should be supervised to make sure that they do not play with the device.

Attention!

- Run a visual inspection of the device before every use. Do not use the device if the safety appliances are damaged or worn out. Never override safety regulations.
- Use the device exclusively according to the intended purpose stated in these instructions.
- You are responsible for the safety of the working environment.
- If the cable or the plug is damaged due to external influences the cable must not be repaired! It must be replaced with a new one. This work may only be carried out by an electrician.
- The voltage indicated on the type label of the device of 230 V AC must correspond to the existent mains voltage.
- Never lift, carry, or suspend the device by its power cable.
- Make sure that the electrical plug connection is protected from flood and moisture.
- Before working on the pond pump, disconnect the appliance by taking the plug out of the socket.
- Avoid exposing the appliance to a direct water jet or rain.
- The user is responsible for the compliance with local specific safety and installing regulations. If necessary, ask an electrician.
- Damage arising from flooded rooms caused by dysfunctions of the appliance must be avoided by means of the appropriate measures (e.g., by installing an alarm system, a reserve pump).
- In case of malfunction, the repair work can only be carried out by a qualified electrician.
- The appliance must not run dry or with a completely closed intake line. The manufacturer's warranty is no longer valid if the damage is caused by dry running.
- The appliance must not be used for swimming pools.
- The device cannot be employed for potable water circuits.

Warning

Read all safety notes and the instructions thoroughly. Non-compliance with the safety rules and regulations can lead to an electric shock, fire and/ or serious injury. Keep the instructions and the safety notes in a safe place for future reference.

Stability

The temperature of the transported liquid should not exceed +35 °C in permanent operation. The transport of aggressive fluids (acids, alkalis, etc.) as well as of abrasive substances (e.g., sand) must be avoided.

Electrical connection

- The electrical connection takes place via an electrical safety socket 230 V ~ 50 Hz. Fuse protection at least 10 A.
- The engine is protected against overloading or blocking by means of an integrated motor protection. In case of overheating the pump is turned off automatically due to the integrated overheating protection and after the pump has cooled down, it starts automatically.

Power connection

The pond pump is equipped with a safety plug. The device is designed to be connected to an isolated ground receptacle with 230 V ~ 50 Hz. Make sure that the socket outlet is sufficiently fused (at least 6 A) and safe. Insert the plug in the socket outlet and the pond pump is ready for use.



Installation

Please position the pump under water and make sure that no water gets into the socket.

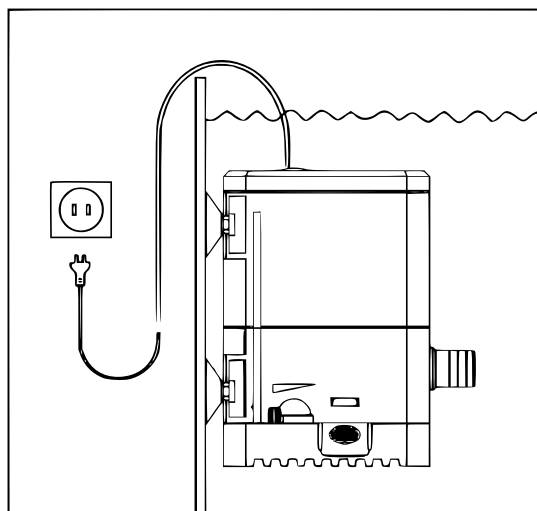


Figure 1

The pump can be installed as follows: in a fixed position with a fixed or flexible hose.

Use as submersed pump (see Fig. 1)

- Immerse the pump into the pond water, so that it fills with water.
- To avoid the premature clogging of the filter, position the pump above the pond sludge.
- The pump is started by plugging it into the mains plug.



Commissioning

After reading the installation instructions carefully, the pump can be started considering the following aspects:

1. Check if the pressure pipes have been installed properly.
2. Make sure that the electrical connection is 230 V ~ 50 Hz.
3. Check if the socket is in proper working order.
4. Make sure that moisture or water never reaches the mains connection.
5. Avoid the pump from operating dry.
6. Do not use the pump without a filter basket, as this protects the pump from large debris which can lead to blockage of the pump.

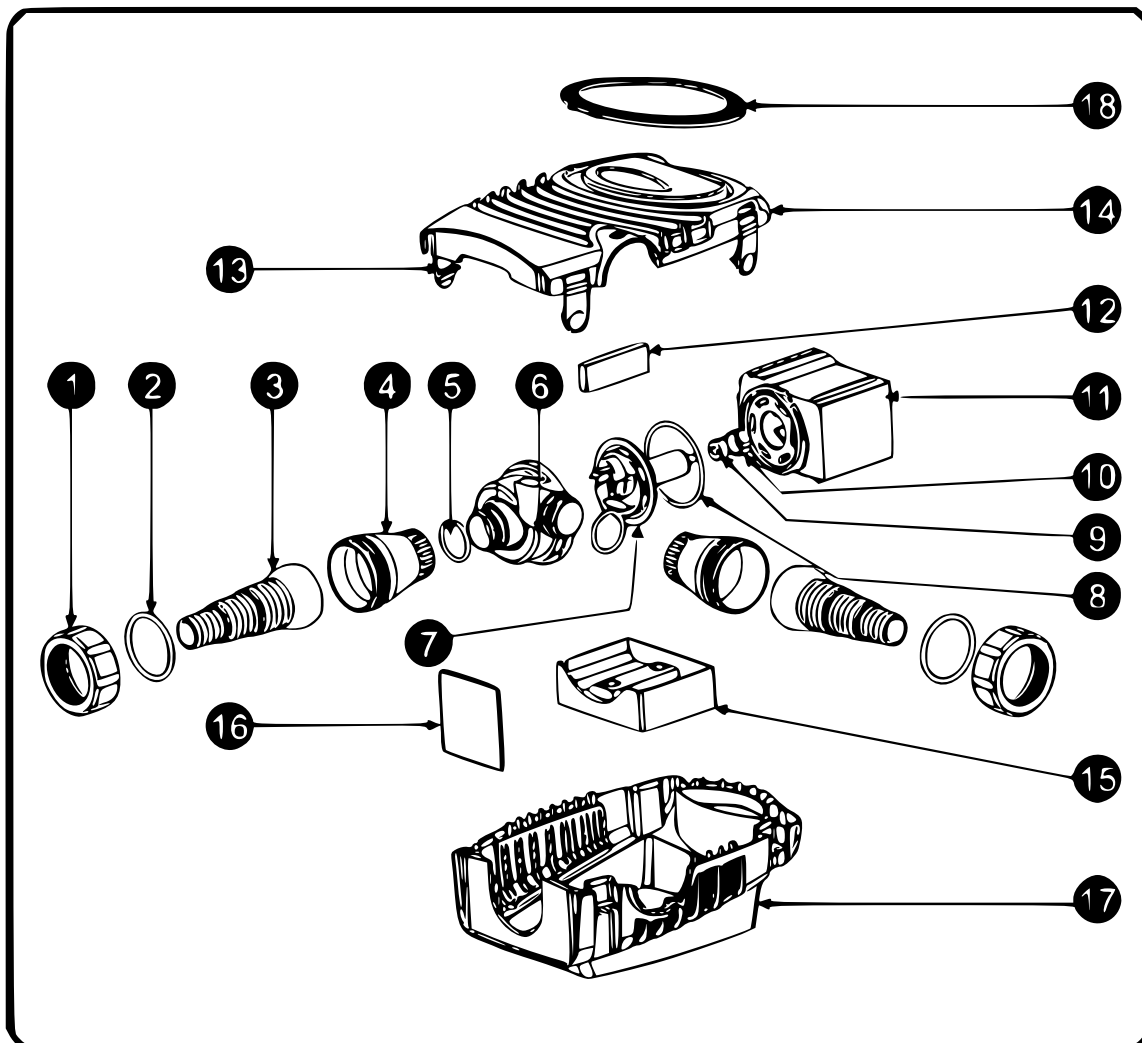
Maintenance

The pond motor pump is a maintenance-free and a practice-proven quality product that was subjected to rigorous final inspections. For a long working life and continuous operation, we recommend regular checking and proper care.

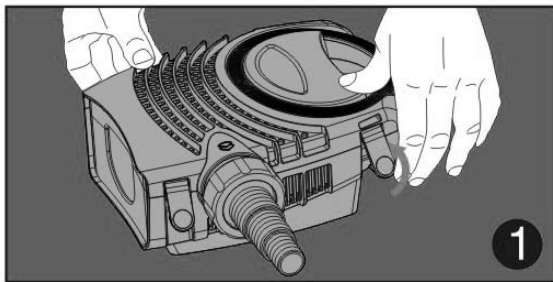
Winter storage

1. Take the pump out of the water and disconnect it from the power supply.
2. Clean the pump, as described in the instructions.
3. Check the pump for damage, such as cracks in the housing.
4. Please store the pump under frost-free conditions, if possible, in a container filled with water.

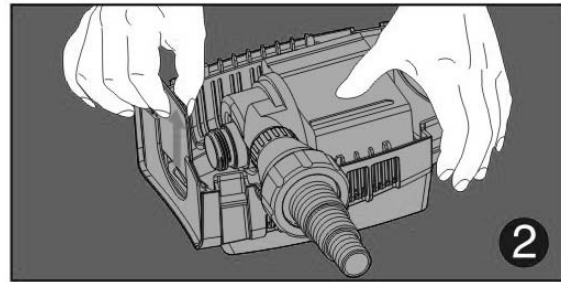
Explosion view, parts list, and construction



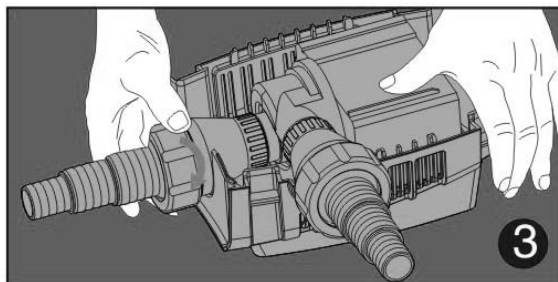
Nº	Name	Nº	Name
1	Nut	10	Bearing housing
2	Large O-ring	11	Motor
3	Stepped hose nozzle	12	Rubber stopper
4	Adaptor	13	Fastening clip
5	Small O-ring	14	Upper filter cage
6	Pump housing	15	Motor bracket
7	Impeller	16	Inlet guard
8	Impeller O-ring	17	Lower filter cage
9	Impeller bearing	18	Upper filter cage ring



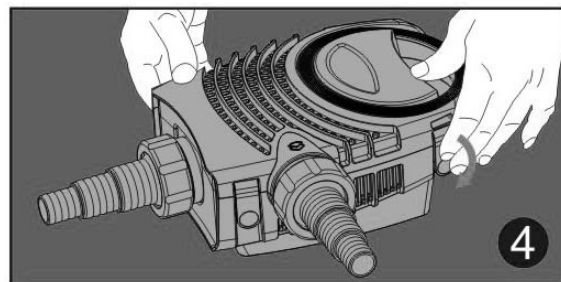
Unfasten the four clips on the upper filter housing and gently pull to remove it.



If an inlet stepped hose nozzle is required, remove the inlet guard (see part 16 of explosion view).



Assemble and fit the inlet adaptor and stepped hose nozzle as shown.



Replace the upper filter cage and fasten the clips.

Technical specifications

Item №	Model	Power consumption (W)	Max. flow rate ($\frac{1}{h}$)	Delivery head (m)
51000	NEO2800	10	3000	2
51001	NEO3800	20	3600	2.8
51002	NEO4800	30	4500	4
51003	NEO5800	40	5200	4.8
51004	NEO5000	30	5000	3.2
51005	NEO6000	40	6000	4.2
51006	NEO7000	50	7000	4.6
51007	NEO8000	70	8000	5.6
51008	NEO10000	80	10,000	6.0
51009	NEO12000	100	12,000	6.5
51010	NEO14000	120	14,000	7
51011	NEO16000	140	16,000	7.5

- **Energy supply:** 230 V~50 Hz
- **Cable length (m):** 10
- **Particle size (mm):** 6
- **Hose connections (mm):** 25 / 33 / 38 (1"-1½")

Disposal regulations

EU guidelines regarding the disposal of scrap electric appliances (WEEE, 2012/19/EU) were implemented in the law related to electrical and electronic equipment and appliances.

All WiTec electric devices that fall under the WEEE regulations are labelled with the crossed-out wheeled waste bin logo. This logo indicates that this electric equipment must not be disposed with the domestic waste.

The company WiTec Technik GmbH has been registered in the German registry EAR under the WEEE-registration number DE45283704.

Disposal of used electrical and electronic appliances (intended for use in the countries of the European Union and other European countries with a separate collection system for these appliances).

The logo on the article or on its packaging points out that this article must not be treated as normal household waste but must be disposed to a recycling collection point for electronic and electrical waste equipment. By contributing to the correct disposal of this article you protect the environment and the health of your fellow men. Environment and health are threatened by inappropriate disposal.



Material recycling helps reduce the consumption of raw materials.

Additional information on recycling this article can be provided by your local community, municipal waste disposal facilities, or the store where you purchased the article.

Address:
WiTec Wildanger Technik GmbH
Königsbenden 12 / 28
D-52249 Eschweiler

Important notice:

The reprint or reproduction, even of excerpts, and any commercial use, even in part, of this instruction manual require the written permission of WiTec Wildanger Technik GmbH.