

Operation Manual

Semi-automatic Washing Machine

62047

toboli



Illustration similar, may vary depending on model

Read and follow the operating instructions and safety information before using for the first time.

Technical changes reserved!

Due to further developments, illustrations, functioning steps, and technical data can differ insignificantly.

Updating the documentation

If you have suggestions for improvement or have found any irregularities, please contact us.

The information contained in this document may alter at any time without previous notice. It is prohibited to copy or spread any parts of this document in any way without prior written allowance. All rights reserved.

The WilTec Wildanger Technik GmbH cannot be held accountable for any possible mistakes in this operating manual, nor in the diagrams and figures shown.

Even though, the WilTec Wildanger Technik GmbH has undergone biggest possible efforts to ensure that the operating manual is complete, faultless, and up to date, mistakes cannot be entirely avoided.

If you should find a mistake or wish to make a suggestion for improvement, we look forward to hearing from you.

Send an e-mail to:

service@wiltec.info

or use our contact form:

<https://www.wiltec.de/contacts/>

The most recent version of this manual in various languages can be found in our online shop via:

<https://www.wiltec.de/docsearch>

Our postal address is:

WilTec Wildanger Technik GmbH
Königsbenden 12
52249 Eschweiler
Germany

To return orders for exchange, repair, or other purposes, please use the following address. Attention! To allow for a smooth execution of your complaint or return, it is important to contact our customer service team before returning the goods.

Returns Department
WilTec Wildanger Technik GmbH
Königsbenden 28
52249 Eschweiler

E-mail: **service@wiltec.info**

Tel: +49 2403 55592-0

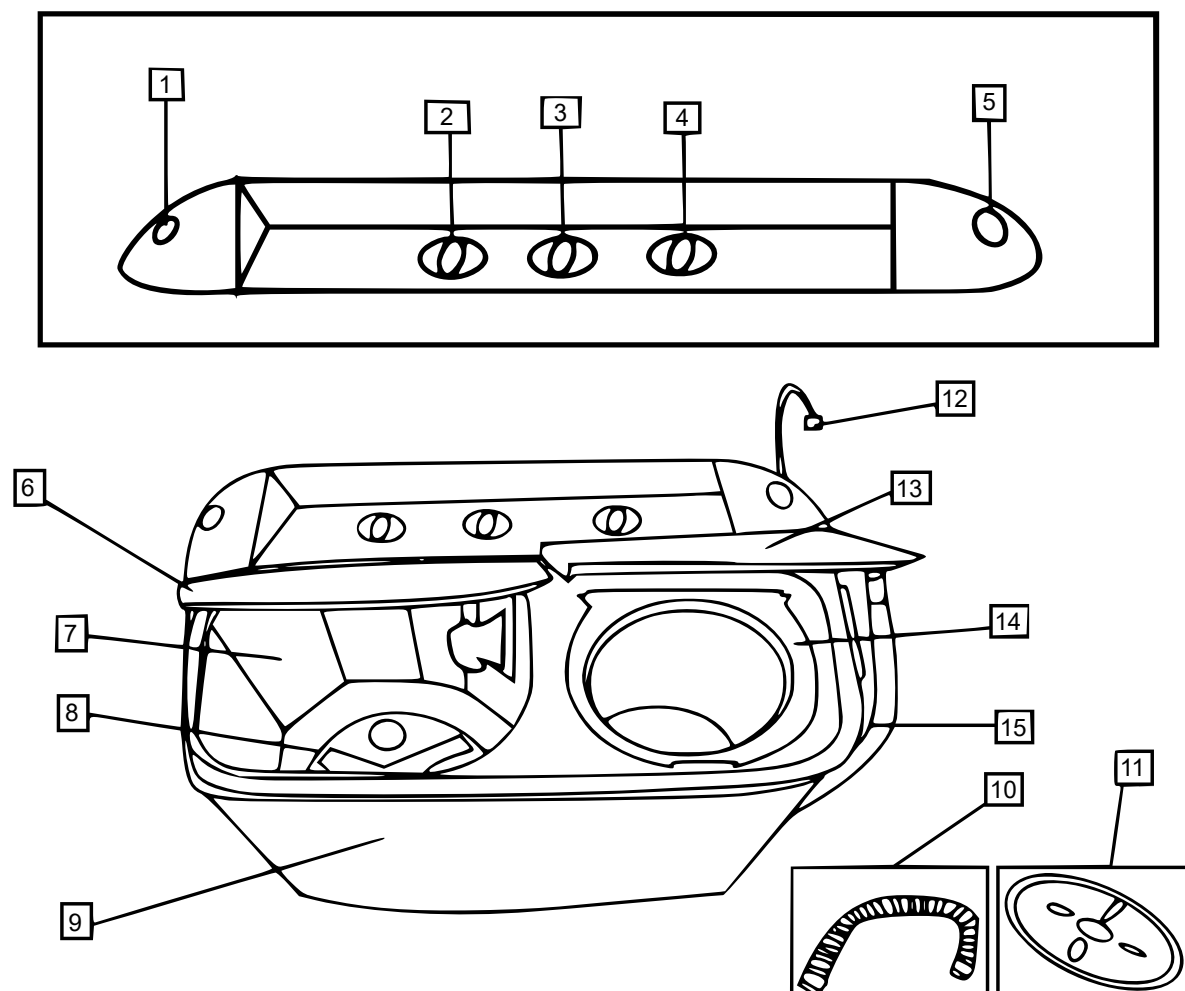
Fax: +49 2403 55592-15

Introduction

Thank you for purchasing this quality product. **To minimise the risk of injury we urge that our clients take some basic safety precautions when using this device. Please read the operation instructions carefully and make sure you have understood its content.**

Keep these operation instructions safe.

Components and their names



Nº	Name	Nº	Name
1	Wash water inlet	9	Outer body
2	Wash timer	10	Water inlet hose
3	Wash selector	11	Safety cover
4	Spin timer	12	Power cord
5	Spin water inlet	13	Spin cover
6	Wash cover	14	Inner spin cover
7	Wash tub	15	Drain hose
8	Pulsator		

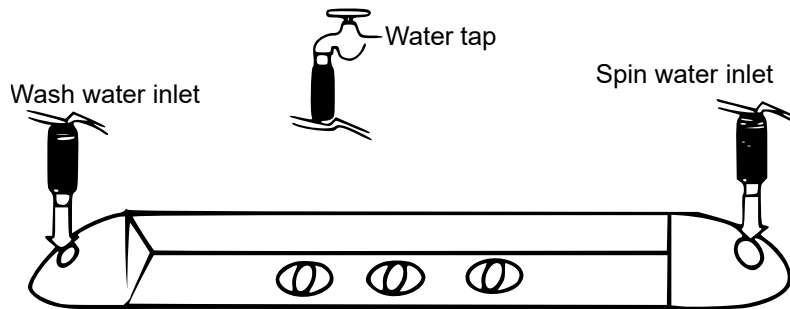
Warning

<p>In case of a damaged plug top or power supply cord, repair is only allowed to be done by the manufacturer or an authorised service partner. The product must be repaired before re-use.</p>	<p>Do not share one power outlet with other electrical appliances. Only use a direct power source. Keep the plug strip clean.</p>
<p>Prevent children from playing near the machine.</p>	<p>Never put your hand in the tub while it is running!</p>
<p>Keep the machine away from heat-generating equipment and direct sunlight.</p>	<p>Do not place the machine in the bathroom. Such action may damage the electrical insulation and cause the body to rust.</p>
<p>Do not put heavy things on top of the machine.</p>	<p>Do not wash waterproof clothes like raincoats. Abnormal vibration may occur within the spin tub.</p>
<p>Do not wash laundry soaked with petrol and organic solvent.</p>	<p>Place the machine on a flat and solid ground!</p>
<ul style="list-style-type: none"> • Changing the power cord may only be done by a qualified electrician. • This appliance is not intended for use by persons (including children) with reduced physical, sensory, or mental capabilities as well as lack of experience and knowledge unless they have been given supervision or instruction concerning use of the appliance by a person responsible for their safety. • Prevent carpet from blocking the inlet scoop. 	

Operation

Preparation before washing

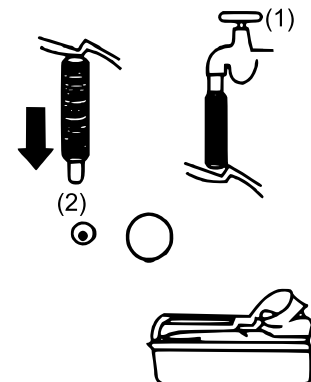
1. Place the drain hose to drainage so that the drained water can run off.
2. Plug the power supply cord to the mains but be sure to check first if the voltage corresponds to the rating label of the appliance. You must use a European Two Round Pins Plug.
3. Insert the water inlet hose into water inlet connector.
4. Select the water level according to the quantity of laundry by referring to water level marking.



Washing procedure

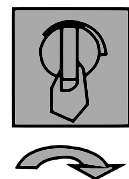
Washing

- Water inlet (2): Put the water tap (1) to the desired position.
- Add water and dissolved detergent to make the water reach the expected level. Operate the machine to stir the detergent evenly by turning the washing knob.
- Put in laundry.
- Select wash duration according to the weight of laundry.
- Select washing type (Normal/Stronger) according to the weight of laundry. After each end of a washing operation set the wash selector to "Drain."



Drain the water

Since the washing machine has a drain pump, the water will flow faster upon turning the Drain Selector to drain position. Be sure to turn Drain Selector immediately back to normal position when the water is completely gone from the wash tub.

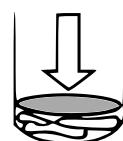


Intermediate-spin (removing detergent/dry)

- Move laundry from wash tub to spin tub.
- Spin to remove dissolved detergent.
- Arrange laundry evenly in the spin tub without stacking them all on one side. An unbalanced spin tub may cause abnormal vibration and noise.
- Place the safety cap on top of the laundry and press it down firmly.
- After rinsing close the outer cover of the spin tub and spin for 1 min.



Place safety cover



Press down firmly

Note: Rearrange the laundry if abnormal noise occurs due to unbalanced loading of the spin tub.

Soak rinse

- Place the laundry in the wash tub and then select a suitable washing type.
- Select the water level according to the amount of laundry.
- Rinse: Set the timer in a range from 0–5 min and let it rinse.

Dry spin

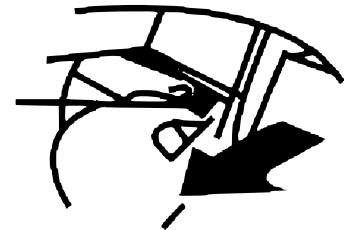
- Arrange the laundry evenly in the spin tub. Avoid stacking them all on one side. An unbalanced spin tub will cause abnormal noise and then will need to be rearranged.
- Press the laundry down firmly and place the safety cover on top of them.
- Select a suitable spinning duration according to the quantity of laundry (1 min, 3 min, 5 min possible).

Maintenance

Please unplug the power supply cord before performing any disposal. There will be lint left behind in the overflow filter and the lint filter after each use. These filters need to be cleaned frequently in order to maintain the top performance of the machine.

Cleaning the entire machine

- Clean the machine with a soft damp cloth.
- Do not spray water directly onto the machine.
- If the machine is too dirty, add neutral detergent to clean it.
- Do not use petroleum-based detergents to clean the machine, as this will spoil the appearance.



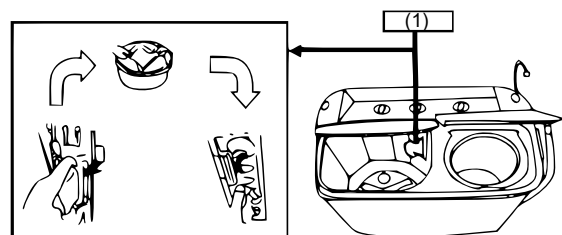
Cleaning the overflow filter (at least once within 2 months)

- Dismantle the overflow filter by pushing the flexible fastening claw gently to be able to pull it away from the machine.
- Clean the filter by putting it under running water completely.
- Install the overflow filter again. Install the bellows first and then insert the tie plate of the bottom of the valve cover. Put up the hook on the left top and press the top to the slot as shown in the picture.



Cleaning the lint filter

- The lint filter **(1)** must be used during each time of washing.
- It must always be cleaned immediately after each use.
- Dismantling the filter: Hold the filter frame as shown in the picture, gently press downward and pull off from the filter.
- Cleaning the filter: Wash the filter while it is still wet. Wash it with plain water only. Dry it afterwards. Avoid drying it under direct sunlight.



- Re-installing the filter: Insert the bottom part of the filter frame into the slot and the gently push the filter in place.

Troubleshooting

Before calling a technician or sending your machine back for repair, please check this troubleshooting list first. Contact the manufacturer or an authorised service partner in case of questions.

Problem	Possible Cause/Solution
Machine does not work	<ul style="list-style-type: none"> • Power cut? • Power supply cord connected to power outlet? • Pulsator tangled with something?
Unable to drain	<ul style="list-style-type: none"> • Drain hose lowered? • Drain hose frozen? • Drain hose blocked? • Any clothes fallen outside of the spin tub?
Abnormal sound while washing	<ul style="list-style-type: none"> • Any loose particles in the wash tub?
Reduced water in wash tub	<ul style="list-style-type: none"> • Bellows of overflow filter miss-installed?
Abnormal sound and violent vibration while spinning	<ul style="list-style-type: none"> • Machine placed on a flat and solid ground? • Spinner cap placed into the spin tub? • Any clothes fallen outside of the spin tub? • Too much laundry in the spin tub?

Caution: Do not attempt to repair the machine by yourself.
Turn off the power or disconnect the power plug from the mains after having finished washing or spinning.

Disposal regulations

EU guidelines regarding the disposal of scrap electric appliances (WEEE, 2012/19/EU) were implemented in the law related to electrical and electronic equipment and appliances.

All WilTec electric devices that fall under the WEEE regulations are labelled with the crossed-out wheeled waste bin logo. This logo indicates that this electric equipment must not be disposed with the domestic waste.

The company WilTec Technik GmbH has been registered in the German registry EAR under the WEEE-registration number DE45283704.

Disposal of used electrical and electronic appliances (intended for use in the countries of the European Union and other European countries with a separate collection system for these appliances).

The logo on the article or on its packaging points out that this article must not be treated as normal household waste but must be disposed to a recycling collection point for electronic and electrical waste equipment. By contributing to the correct disposal of this article you protect the environment and the health of your fellow men. Environment and health are threatened by inappropriate disposal.



Material recycling helps reduce the consumption of raw materials.

Additional information on recycling this article can be provided by your local community, municipal waste disposal facilities, or the store where you purchased the article.

Address:
WilTec Wildanger Technik GmbH
Königsbenden 12 / 28
D-52249 Eschweiler

Important notice:

The reprint or reproduction, even of excerpts, and any commercial use, even in part, of this instruction manual require the written permission of WilTec Wildanger Technik GmbH.