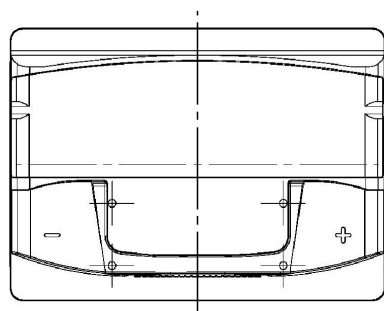
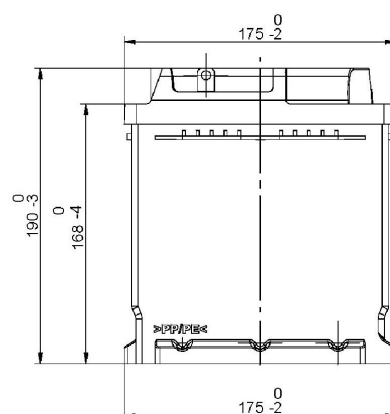
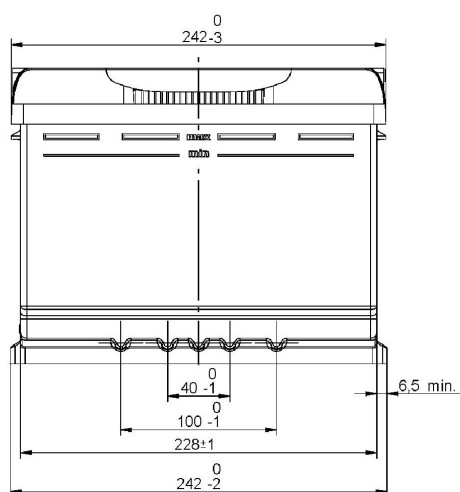


Central Article Code: L02066C05-A

Created: 11/11/2013

ETN Code or Other:

Modified: 21/03/2014



Final Outlook	L0205-A
Approval date	15/02/2014

PERFORMANCES

Voltage (V):	12 V
C20 (Ah):	64.0 20 h
Rc (min):	0
Cranking (A):	640 EN
Vibration:	V2 (35Hz/6g/2h)
Endurance:	E2 (90 cycles@50%)
Charge:	WET
Technology:	Vented/Flooded
Grid:	Ca/Ca

WEIGHT AND STD. DIMENSIONS

Battery Weight (kg ± 5%):	15.9
Volume acid (l ± 5%):	3.7
Length (mm ± 2):	242
Width (mm ± 2):	175
Height (mm ± 2):	190

All figures show nominal values. Tolerances are according to EN50342 and applicable European Regulations.

CONTAINER

Type:	L02	GREY DARK
Hold Down:	B13	
H.D. Adapter:	No	

COVER

Type:	Double with Rigid	GREY DARK
Polarity:	ETN 0	
Terminals:	EN taper post	
Terminal Adapter:	No	
SOCI:	No	
Ventilation:	Central	
Filter:	2 Filters	
Lateral Plug:	Standard	Right side BLACK shape

PLUGS

Type:	1 x Vent Sealed PSL-	GREY DARK
-------	----------------------	-----------

HANDLES

Type:	1 x PSL AM	GREY DARK
-------	------------	-----------

OTHERS

Degassing Tube:	No
-----------------	----