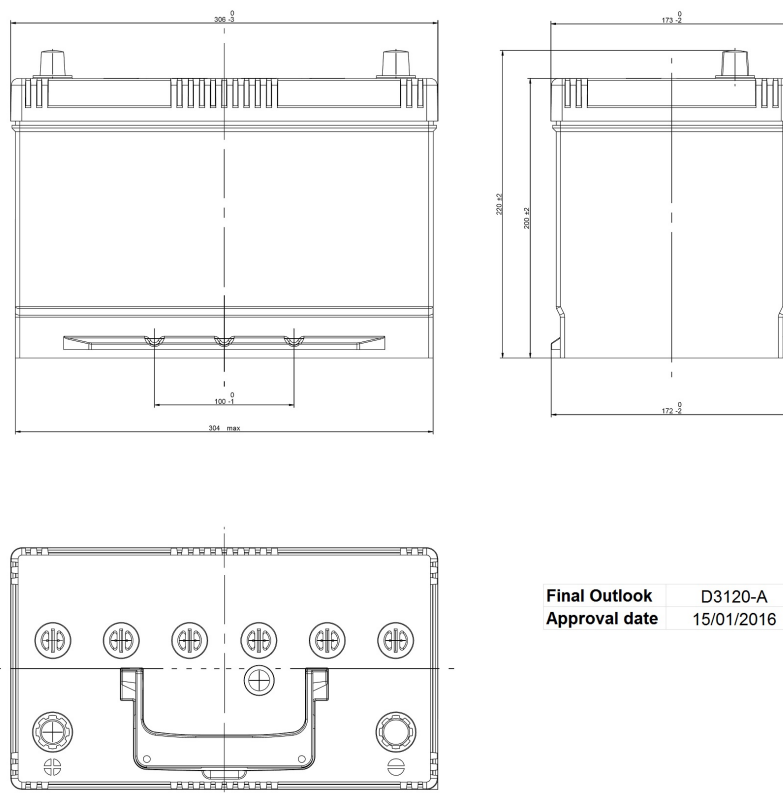


Central Article Code: D31079C20-A

Created: 17/05/2017

Local Code: EL955

Modified: 31/07/2020



Final Outlook	D3120-A
Approval date	15/01/2016

## PERFORMANCES

Voltage (V):	12 V
C20 (Ah):	80.0 20 h
Cranking (A):	782 EN
Charge:	WET
Technology:	Vented/Flooded
Grid:	Ca/Ca
Vibration:	Manufactured Specific
Endurance:	Mazda Requirement (MHF)

## STD. DIMENSIONS

Length (mm ± 2):	306
Width (mm ± 2):	173
Height (mm ± 2):	222
Total Weight (kg ± 5%):	21.60

All figures show nominal values. Tolerances are according to EN50342 and applicable European Regulations.

## CONTAINER

Type:	D31 BLACK
Hold Down:	Korean B1
H.D. Adapter:	No

## COVER

Type:	Flat/Screw Integrate BLACK
Polarity:	ETN 1
Terminals:	EN taper post
Terminal Adapter:	No
SOCI:	Black SOCI with one ball
Ventilation:	Independent
Filter:	No
Lateral Plug:	No

## PLUGS

Type:	6 x M18 (Filter) BLACK
-------	------------------------

## HANDLES

Type:	1 x Integrated BLACK
-------	----------------------

## OTHERS

Degassing Tube:	No
-----------------	----