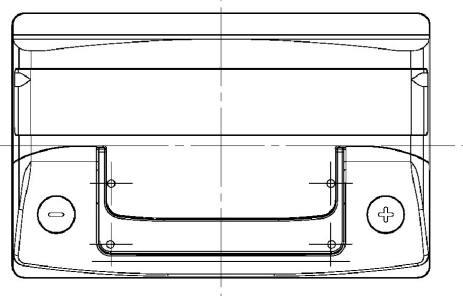
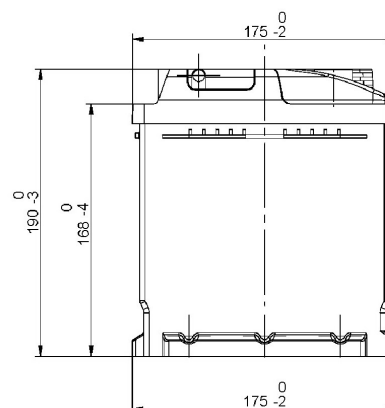
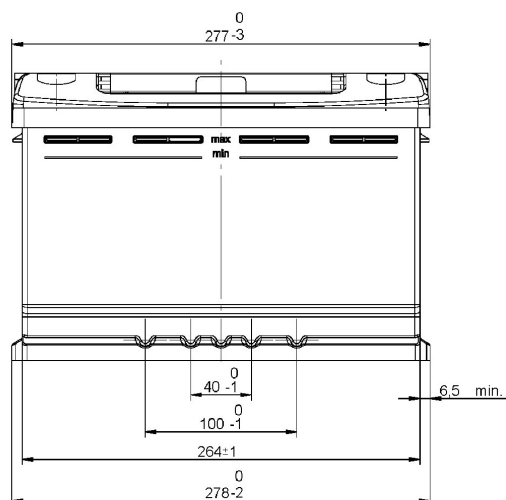


Central Article Code: L03068C14-B

ETN Code or Other:

Created: 22/09/2005

Modified: 04/03/2014



Final Outlook	L0314-B
Approval date	01/04/2008

PERFORMANCES

Voltage (V): 12 V
 C20 (Ah): 74.0 20 h
 Rc (min): 0
 Cranking (A): 680 EN
 Vibration: V1 (35Hz/3g/2h)
 Endurance: E1 (180 cycles@25%)
 Charge: WET
 Technology: Vented/Flooded
 Grid: Ca/Ca

WEIGHT AND STD. DIMENSIONS

Battery Weight (kg ± 5%): 17.8

Volume acid (l ± 5%): 4.4
 Length (mm ± 2): 278
 Width (mm ± 2): 175
 Height (mm ± 2): 190

All figures show nominal values. Tolerances are according to EN50342 and applicable European Regulations.

CONTAINER

Type: L03 BLACK
 Hold Down: B13
 H.D. Adapter: No

COVER

Type: NPR BLACK
 Polarity: ETN 0
 Terminals: EN taper post
 Terminal Adapter: No
 SOCI: No
 Ventilation: Central
 Filter: 2 Filters
 Lateral Plug: Standard Right side BLACK shape

PLUGS

Type: 1 x NPR (Manifold) BLACK

HANDLES

Type: 1 x NPR (Thin) BLACK

OTHERS

Degassing Tube: No