

SYSTEM energy

ESK 570

200
Watt



Compact **SIZE**

Technical Specifications

Component:	2 way system	
Size	EV 570 woofer	5"x7"
	ET 20 tweeter	20 mm (3/4")
Power Handling (Watt)	peak	200
	continuous program	100
Impedance	Ohm	4
Frequency response	Hz	60 - 23k
Sensitivity	dB/SPL	93
Outer diameter	mm	195
Mounting hole diameter	mm	184
Magnet size	mm	85
Total depth	mm	72
Mounting depth	mm	65
Weight of one component	Kg	0,948
Woofer voice coil diameter	mm	25

EV 570 Electro-Acoustic Parameters

D	mm	143
Xmax	mm	4,5
Re	Ohm	3,15
Fs	Hz	98
Le	mH@1kHz	0,48
Le	mH@10kHz	0,19
Vas	lit	7
Mms	gr	12,5
Cms	mm/N	0,2
BL	T-m	4,6
Qts		1,1
Qes		1,2
Qms		10,6
Spl (1m/2,83V)	dB	91

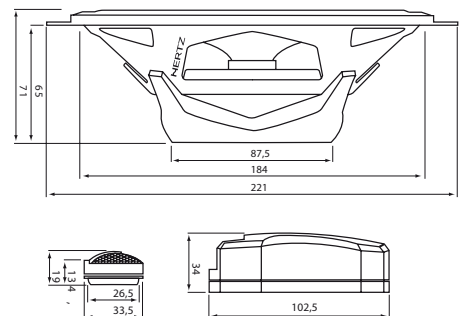
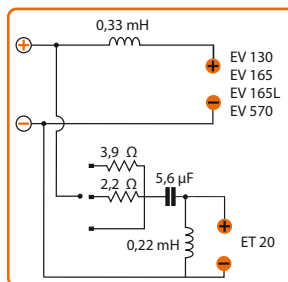
ET 20

- 1 Tetolon dome; extremely light and well damped for a smooth and extended high frequency response.
- 2 20mm Ø, ultra light ferrofluid-cooled mobile voice coil.
- 3 High energy REN neodymium magnet.
- 4 Low carbon content plates for maximum magnetic permeability and high heat dissipation.
- 5 Damping material; controlling acoustic resonances insuring clear, brilliant high frequency tones.
- 6 High frequency diffraction lens, optimizing off-axis high frequency response.

EV 570

- 1 Low carbon content plates for maximum magnetic permeability and high heat dissipation.
- 2 Large motor assembly provides excellent voice coil control.
- 3 Pure copper voice coil wound on Til former, for very good thermal and mechanical capacity.
- 4 Vent hole provides linear excursion and better thermal dissipation.
- 5 Water-repellent treated paper cone.
- 6 "V" cone, for the best off-axis response, clear mid-high frequency detail and powerful bass.
- 7 Rubber magnet cover provides damping to the basket and motor structure and protects from abrasions and damages.
- 8 DIN size basket coated with scratch-proof, corrosive-resistant material.
- 9 High density rubber surround, glued with heat-resistant adhesive.
- 10 Epoxy glue for basket and motor system provides perfect coupling.
- 11 Curve memory Nomex spider for consistent, reliable performance.
- 12 Tin-plated, high current terminals.
- 13 Silver-plated lead wires for maximum reliability and conductivity.

CX 200



HERTZ