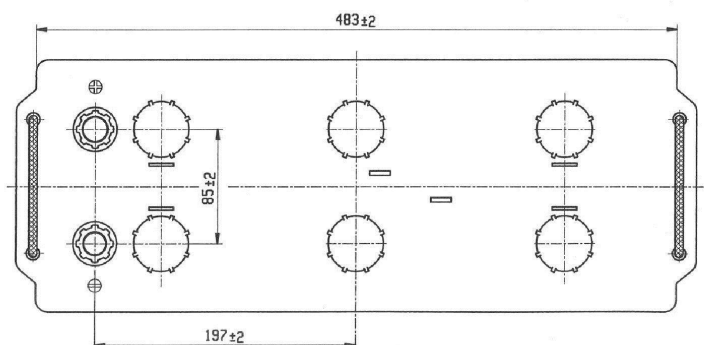
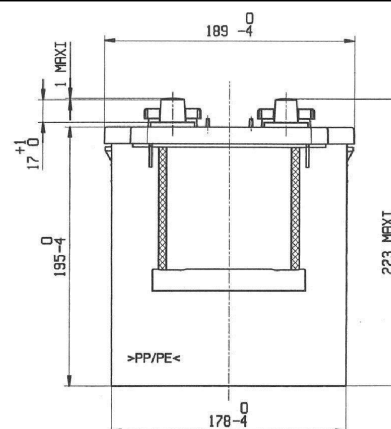
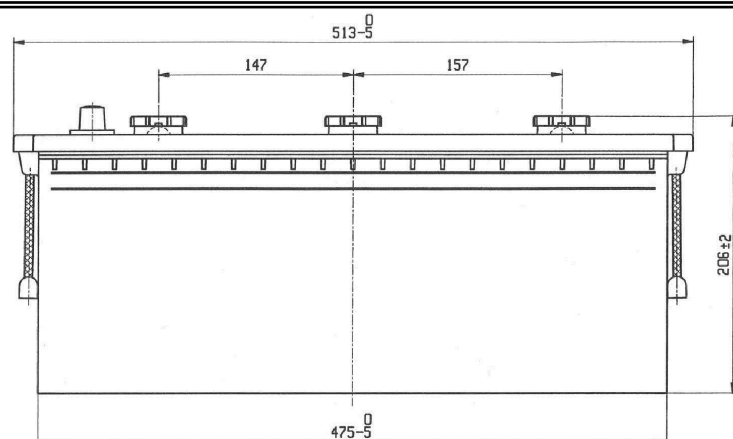


Central Article Code: D04070R16-A

ETN Code or Other: 96051

Created: 31/03/2009

Modified: 9/10/2013



Final Outlook	D0416-A
Approval date	30/04/2009

## PERFORMANCES

Voltage (V): 12 V  
 C20 (Ah): 135.0 20 h  
 Rc (min): 0  
 Cranking (A): 700 EN  
 Vibration: V3 (35Hz/6g/20h)  
 Endurance: 300 cycles@75%  
 Charge: WET  
 Technology: Semi-Traction  
 Grid: 4% Sb

## WEIGHT AND STD. DIMENSIONS

Lead Weight (kg): 23.17  
 Battery Weight (kg): 39.45  
 Volume acid (l): 9.59  
 Length (mm): 513  
 Width (mm): 189  
 Height (mm): 223

All figures show nominal values. Tolerances are according to EN50342 and applicable European Regulations.

## CONTAINER

Type: D04 WHITE  
 Hold Down: B0  
 H.D. Adapter: No

## COVER

Type: Flat/Screw WHITE  
 Polarity: ETN 3  
 Terminals: EN taper post  
 Terminal Adapter: No  
 SOCI: No  
 Ventilation: Independent  
 Filter: No  
 Lateral Plug: No

## PLUGS

Type: 6 x M27(STS) RED

## HANDLES

Type: 2 x Rope (Rigid) BLACK

## OTHERS

Degassing Tube: No