

**Note:**

- 1.The installation instructions may differ slightly from the actual operation. If there are any differences,please follow the actual situation or contact us.
- 2.Warning: Please do not disassemble any part by yourself,any improper operation will not be covered by our warranty.
3. Please turn off the vehicle power and cut off the battery negative pole of the frunk before installing the product.
4. Please watch the installation video and instructions carefully before installing the product

**installation tutorial video****Aftersale Contact:**

phone/whatsapp : +86 130 4421 9654

Email: support@hansshow.com

**Working Hours (UTC+8):**

9:00AM - 18:30PM (Monday to Sunday)

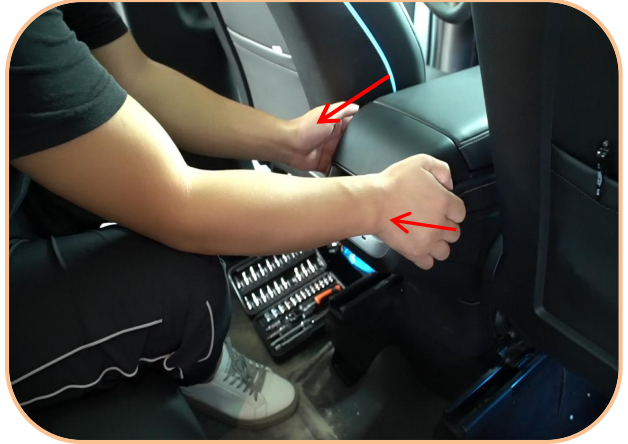
Please leave a message at other times

**Product Diagram**

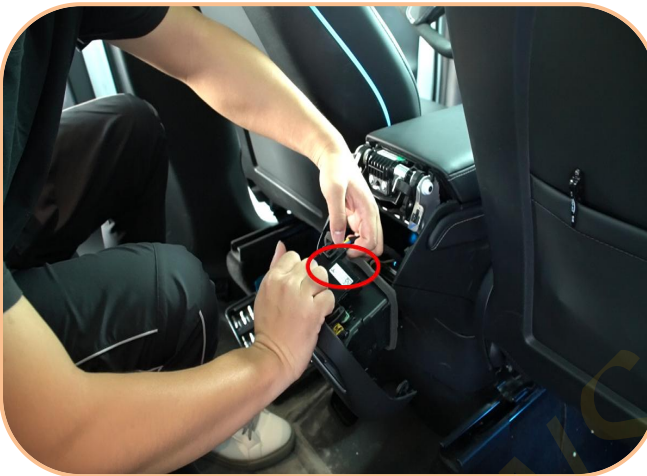
## Intallation Steps



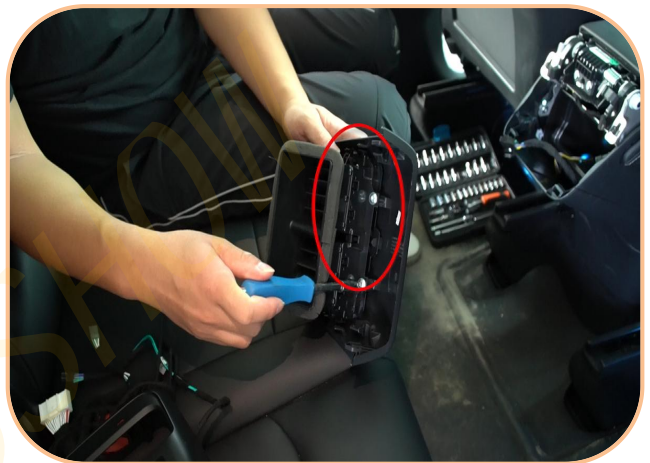
1. Turn off the vehicle power in the vehicle setting



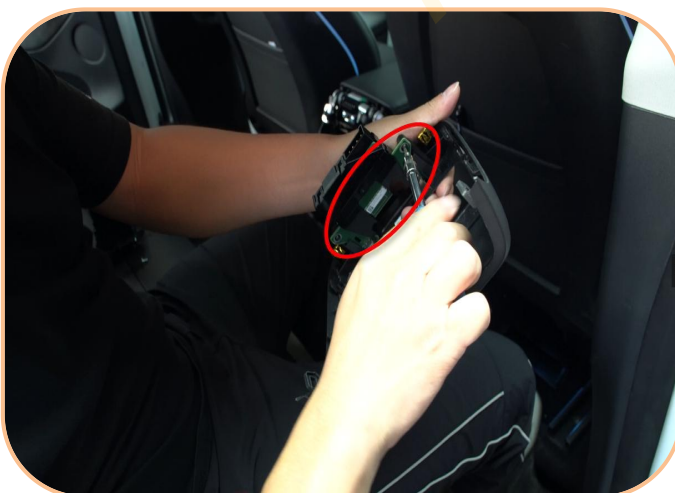
2. Pry the back of the central armrest saddle in the direction of the arrow



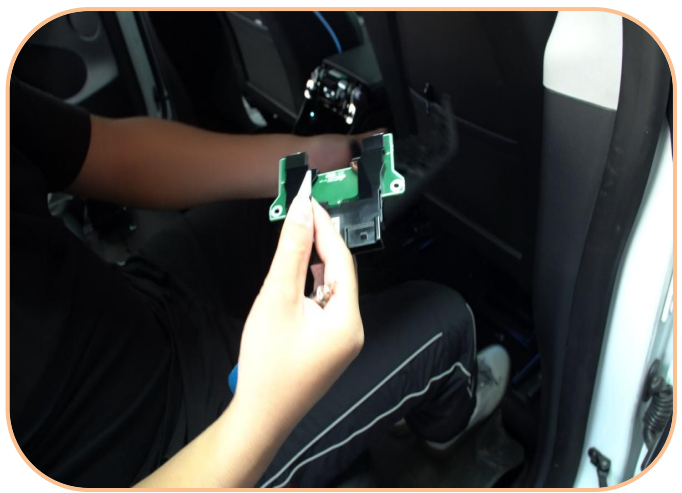
3. Pull off the A/C outlet module plug



4. Unscrew the A/C outlet screw and take out the air conditioner outlet

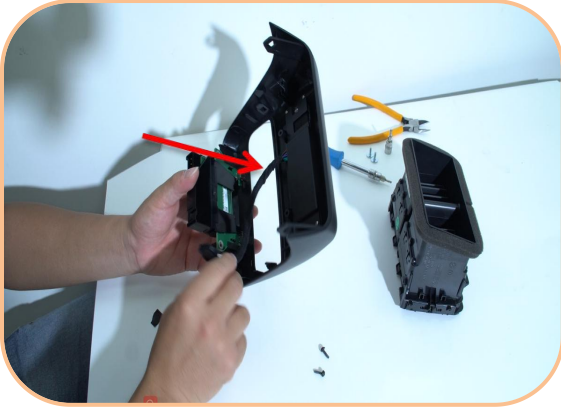


5. Unscrew the A/C outlet module screws



6. Take off the A/C outlet module

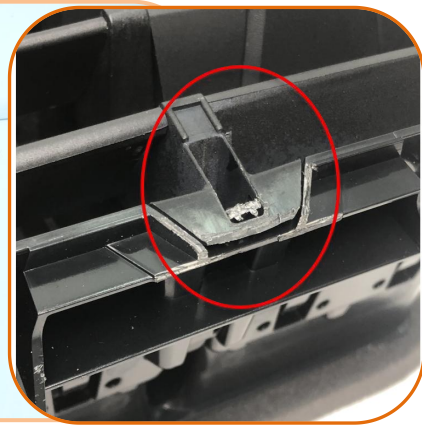




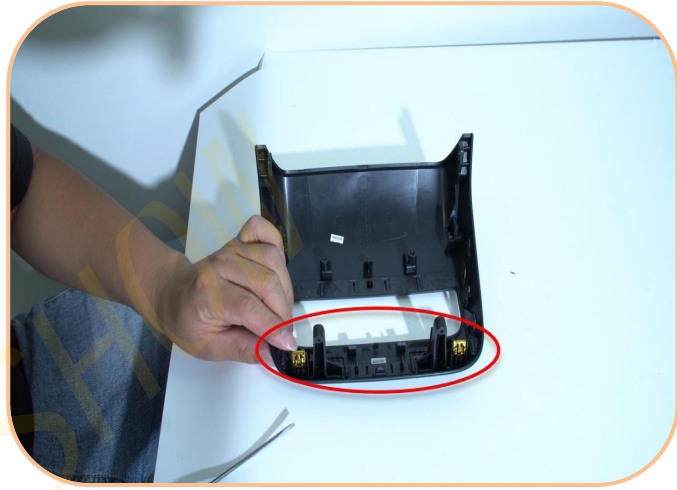
7. Install the module onto the screen panel and screw on the screws



8. Cut off the middle clip at the top of the A/C outlet.



9. Screw on the screws on the upper part of the A/C outlet



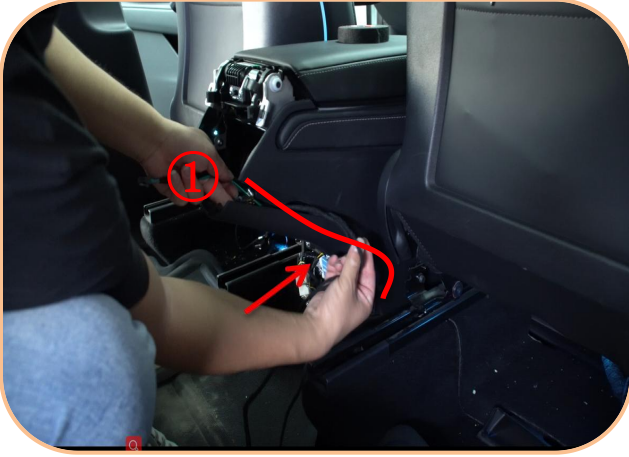
10. Pry off clips on the original panel



11. Install the clips onto the screen panel



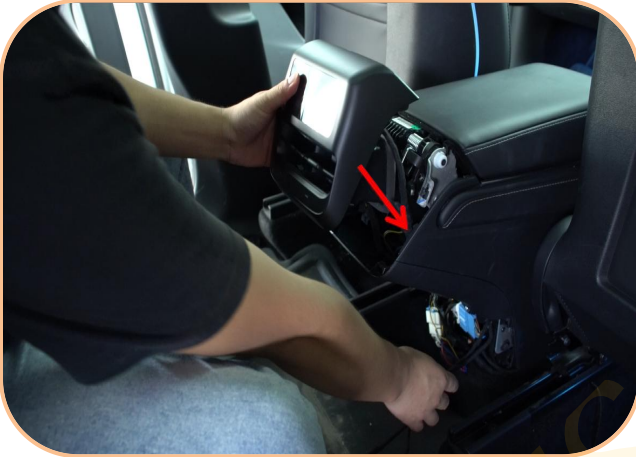
12. Pry the cover plate behind the central armrest saddle in the direction of the arrow



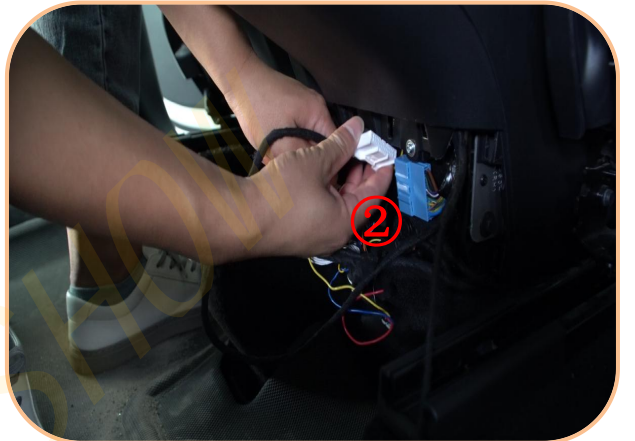
13. Pull harness with **plug ①** to the upper part and restore the cover plate



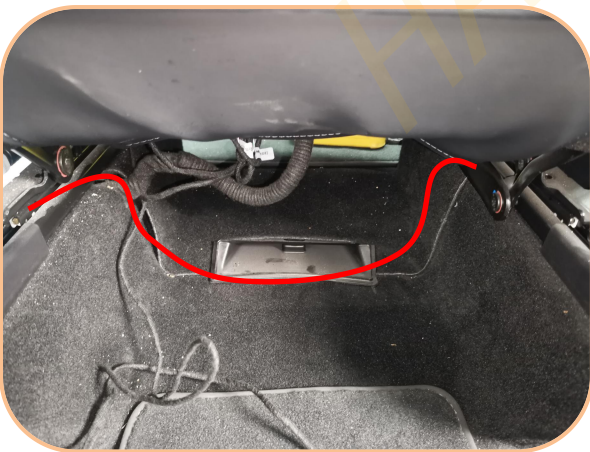
14. Connect the **plug ①** into the screen, and then connect the A/C outlet module plug



15. Install the screen panel



16. Find the blue plug and connect it with **plug ②**



17. According to the red line, route harness (**plug ③**) from the bottom of the seat to the right side of the front right seat



18. And then pull the wire out

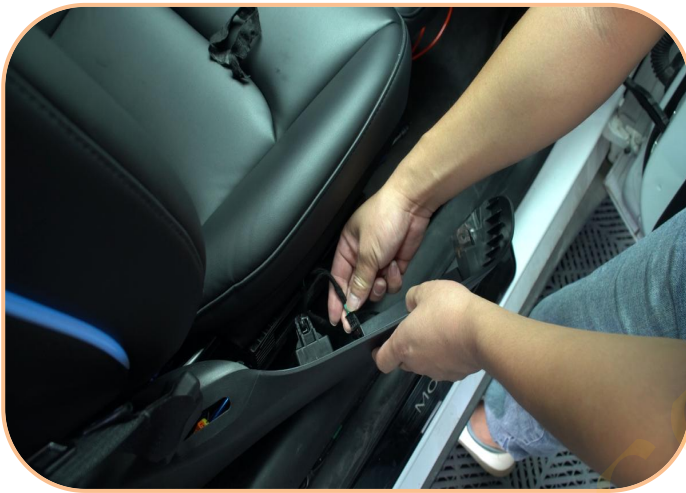




19. Remove a screw on the right side of the bottom of the seat



20. Pry open the side seat button cover



21. Unplug the seat button plug and connect the **plug ③**